



2005-06 BUDGET

B U D G E T O V E R V I E W



Delivering Our Commitments

2005-06 Budget Overview

Contents

Budget Highlights	3
Improving Services	8
Education and Training - Smarter, Skilled People	8
Quality Health Care	10
Improving Community Safety	13
Supporting Communities	17
Providing New Jobs	19
Economic Growth	19
Investing in Infrastructure	19
Tourism	21
Protecting Our Lifestyle	22
Protecting the Environment	22
Enhancing Communities	23
Strengthening Our Regions	26

2005-06 Budget Highlights

The 2005-06 Budget delivers a better deal for families, invests record amounts in State-building infrastructure, provides further tax relief and boosts services in key areas such as education and training.

Responsible financial management – including the delivery of a fifth consecutive surplus – allows the State Government to meet these objectives and fully fund \$1.1 billion worth of election commitments outlined in the lead-up to the 2005 State Election.

INVESTING IN INFRASTRUCTURE

To secure long-term economic growth and opportunities for Western Australia, the Government will continue to make a massive investment in State-building infrastructure. The 2005-06 Capital Works Program is the biggest on record with \$4.7 billion committed to projects aimed at boosting services, creating jobs, protecting our lifestyle and strengthening our regions.

Flagship works include almost \$600 million on the State's electricity system to improve the quality, reliability and safety of electricity supply in both regional and metropolitan areas; \$715 million on water infrastructure, including \$315 million on the Perth Seawater Desalination Project; \$101 million on Western Australia's ports; and \$302 million on improving and expanding State and local road networks.

We will also be building more schools, more hospitals and more police stations to meet the needs of our growing population.

A BETTER DEAL FOR FAMILIES

Raising a family in the modern world can be tough. This is why this year's budget pays special attention to easing the financial burden on Western Australian families.

The State Government will deliver on its \$112 million election pledge to increase the concession for motor vehicle registrations by \$25. This means the total family concession increases to \$53 per year – saving families an extra \$100 over four years.

Public transport fares for school students will drop to 50 cents – no matter how many zones students need to travel to get to and from school. This initiative will cost the Government \$11.4 million during this term.

Another education initiative will see parents receive up to \$400 for every 16 or 17 year old student completing education and training.

In terms of fees and charges, the State Government will continue to minimise the cost of living for Western Australian households. In 2005-06, the Government will remove, reduce or freeze a number of key tariffs, fees and charges that impact on every household's bottom line.

2005-06 Budget Highlights

Continued

There will be no increase in electricity prices for the fifth consecutive year and compulsory third party insurance premiums and stamp duty rates on insurance will remain unchanged. As a result of these decisions, spending by the 'representative household' on the basket of State Government goods and services will decrease by \$80.74. This equates to a 2.5% decrease on the previous year's expenditure and is significantly below the forecast inflation rate of 2.5%. For a pensioner eligible for concessions, the decrease is expected to be \$75.94.

MORE TAX RELIEF

Following \$1.5 billion worth of tax cuts announced last year, the State Government will continue its tax relief program by delivering new measures in 2005-06. These new measures include:

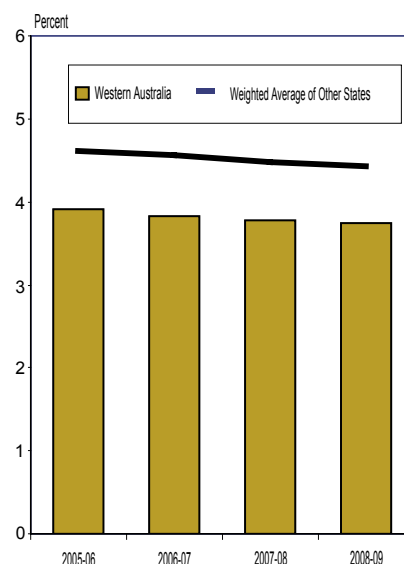
- targeted adjustment of the land tax scale from 1 July 2005 to free around 24,000 (or 20% of) land tax payers from land tax as well as cutting liabilities for all other land tax payers compared to what they would otherwise have paid;
- providing a 50% land tax concession for caravan parks from 1 July 2005. The concession will help to ensure that Western Australian families can continue to access low-cost accommodation in the State's prime holiday destinations;

- exempting loan refinancings undertaken by homeowners and small businesses from mortgage duty, from 1 January 2006. This measure will ensure that Western Australian homebuyers and small businesses can access the most competitive financing packages, particularly in an environment of interest rate uncertainty; and
- changing the TAB betting tax from 4.5% of TAB turnover to 21% of gross margin from 1 July 2007 (equivalent to a tax rate of 3.5% on turnover).

Together with the abolition of debits tax and the family concession/payments measures being funded in the 2005-06 Budget, the tax relief and family concessions/payments are worth a total of \$870 million over the next four years.

TAX COMPETITIVENESS

General Government Taxation Revenue as a Share of GSP^(a)



^(a) Taxation revenue estimates for other jurisdictions are based on the most recent published estimates as of 19 May 2005.

SUMMARY OF TAX RELIEF AND OTHER CONCESSIONS

	2005-06 \$m	2006-07 \$m	2007-08 \$m	2008-09 \$m
TAX RELIEF MEASURES				
Adjustment to land tax scale	-54.5	-58.3	-62.4	-66.8
50% land tax concession for caravan parks	-1.0	-1.0	-1.1	-1.2
Stamp duty exemption for mortgage refinancing	-6.2	-13.1	-13.9	-14.7
TAB betting tax changes	-	-	-11.0	-11.5
Debits tax abolition	-88.0	-96.0	-96.0	-96.0
\$25 increase in family vehicle concession for registration	-26.3	-27.3	-28.5	-29.8
OTHER CONCESSIONS/PAYMENTS				
50 cent fares	-2.3	-3.0	-3.0	-3.1
New learning allowance	-13.6	-13.7	-14.3	-14.3
TOTAL VALUE OF TAX RELIEF AND FAMILY CONCESSIONS/PAYMENTS	-191.9	-212.4	-230.2	-237.4

RESPONSIBLE FINANCIAL MANAGEMENT

Responsible financial management and the State Government's commitment to delivering balanced budgets underpins the 2005-06 Budget. A balanced budget provides the Government with the ability to invest in infrastructure, provide a better deal for families and boost funding in key service areas.

Achieving Surpluses

The 2005-06 Budget projects operating surpluses in each year of the forward estimates period. This meets the Government's commitment to sustainable financial management. For 2005-06, a general government operating surplus of \$521 million is forecast, following an estimated surplus of \$631 million for the current financial year.

The forecast surplus for 2005-06 is the Government's fifth consecutive operating surplus.

These surpluses have and will continue to provide a major source of funding for Western Australia's Capital Works Program. They also provide Government with the flexibility to respond to emerging demands and adverse economic developments outside of the Government's control. This enables a sustainable debt position to be achieved in both the short and long term.

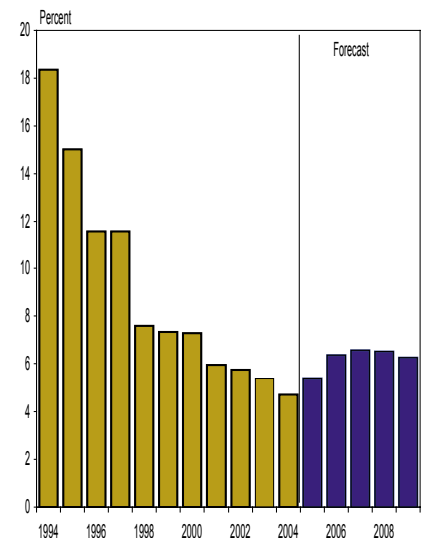
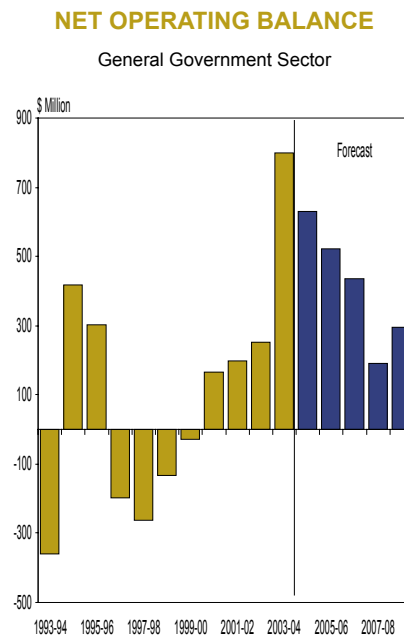
Managing Debt

Reflecting the Government's record investment in economic and social infrastructure across the State, total public sector net debt is estimated to increase to \$7.8 billion by 30 June 2009, up from an estimated \$5.2 billion at 30 June 2005.

The forecast operating surpluses across the forward estimates are crucial in keeping net debt at affordable and sustainable levels. They reduce the need for new borrowings to fund capital works. In this regard, the net debt to revenue ratio for the total non-financial public sector — a key ratio for the State's credit rating — is forecast to remain comfortably below the target limit of 47%. Net debt as a share of the economy is forecast to remain at historically modest levels.

NET DEBT AS A SHARE OF GROSS STATE PRODUCT

Total Public Sector



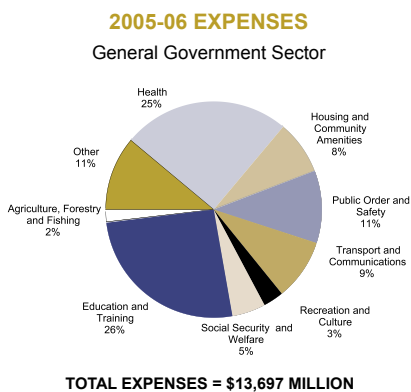
2005-06 Budget Highlights

Continued

Sustainable Growth in Spending

General government expenses are projected to increase by 4.1% (or \$539 million) in 2005-06, and by an average 3.3% per annum across the forward estimates period. These rates of growth are consistent with the Government's target of limiting own-purpose expense growth to no more than the combined growth in population and inflation.

Similar to previous years, the majority of new initiatives in 2005-06 take place in the core areas of education and training, health and public order and safety. These three areas are estimated to account for 62% of total general government expenses in 2005-06.



EDUCATION AND TRAINING

Education and training is a key priority for this Government in its second term. During the next four years an additional \$337.4 million has been provided to meet the Government's election commitments.

During this term, more than \$1 billion will be spent on capital works and maintenance in the area of education and training.

During the next year, the State Government will spend more than \$225 million on government schools and TAFE college infrastructure, including six new primary schools and one replacement primary school. Another six primary schools will be completed during the 2006 school year. Construction of four new high schools and a senior college will also start during 2005-06.

Almost \$190 million has been set aside to meet the State Government's visionary plan to raise the school leaving age and encourage students to complete education and training. This includes:

- up to \$400 for every 16 or 17 year old completing education or training;
- 225 new teachers, 146 new TAFE lecturers and 100 new

training mentors over the next four years; and

- extra cost relief for low-income families or families who live in remote locations.

Other key initiatives will include putting more computers in schools (\$29.5 million), tackling the skills shortage (\$21.4 million), improving student behaviour (\$7.6 million), and raising literacy and numeracy standards (\$8.4 million).

The State Government will also re-establish Perth Modern School as the State's premier school of Academic Excellence (\$27.9 million).

HEALTH

Health will continue to be a priority area for the State Government in 2005-06 with an extra \$466 million allocated in this year's budget for services over the forward estimates including:

- free ambulance travel for aged pensioners and a 50% concession for other seniors aged 65 and over from 1 July 2005 (\$56 million);
- improved coordination and standards of care for cancer patients, with a particular focus on cancer patients in rural areas (\$26 million);
- the permanent increase of 130 general medical beds (\$144 million);
- the Winter Demand Strategy and other supporting initiatives to manage peak service demand (\$74.7 million); and

- a reduction in elective surgery waiting lists (\$40 million) and waiting times for dental care (\$4 million).

During this term, the State Government has also provided funding for an additional 800 nurses, including more than \$12 million to support nurses through initiatives such as the provision of childcare support and improvements to nursing scholarships.

Apart from additional capital funding for new metropolitan infrastructure such as the new southern tertiary hospital, key capital election commitments that will roll out from this year include:

- additional capital funding to significantly upgrade regional health services (\$71.7 million);
- funding for Stage 2 of the Peel Campus and Community Centre (\$6.2 million); and
- funding for the Bunbury Cancer Centre (\$6.5 million) and Bunbury Mental Health facility (\$2.5 million).

LAW AND ORDER

New police stations and more police officers are key features of the State Government's 2005-06 law and order budget. \$765 million will be spent during the next four years on capital works, including almost \$230 million in 2005-06.

During the next four years, the State Government will build 27 new police stations or multi-use facilities. This includes additional funding (\$17.8 million) to fast track the construction of police stations at Ellenbrook, Stirling and Karratha, and the start of construction of a new station at Derby and an upgrade to the South Hedland station.

In 2005-06, work will also start on delivering a new central Perth City Police Complex and detention centre to oversee community safety in the City and Northbridge precincts.

As part of the first stage of the Government's commitment to additional officers and civilian staff, 80 police officers and 40 administrative and expert civilian staff will be recruited in 2005-06.

The success of police strategies in tackling crime has led to a significant increase in prisoner numbers. As a result, the Government has committed an extra \$152.5 million over the next four years to accommodate additional prisoners within the system.

A comprehensive Juvenile Justice Strategy, costing more than \$20 million over four years, has also been implemented to target juvenile crime and increase the successful rehabilitation of young offenders in regional and remote areas.

Improving Services

The State Government is committed to improving the quality of services to all Western Australians, regardless of their postcode.

This year's budget invests heavily in key essential services, such as power and water, and builds upon the Government's commitment to make Western Australia's education and training, health, and law and order systems the best in the world.

EDUCATION AND TRAINING — SMARTER, SKILLED PEOPLE

Operating expenditure for education and training will reach \$3.2 billion in 2005-06 – this represents an increase of \$80 million or 2.6% from 2004-05.

Capital works expenditure is expected to be \$226.9 million in 2005-06 – an increase of \$30.2 million.

Over the next four years, more than \$1 billion will be spent on capital works and maintenance in education and training.

Raising the School Leaving Age

Legislation will be introduced in two stages to increase the leaving age. This will ensure that young people will undertake a full-time combination of school, formal training and/or employment until the end of the year in which they turn 17.

The additional recurrent expenditure required to implement these changes over the five years 2004-05 to 2008-09 totals \$170.1 million and comprises:

- annual payments to parents of \$200 for 16 and 17 year old students in Years 11 and 12 in government and non-government schools and up to \$400 for 16 and 17 year old students enrolled in full time TAFE facilities or with a private registered training organisation (\$69.3 million);
- an extra 280 staff and new programs to better engage 16 and 17 year olds in school and TAFE colleges (\$46.9 million);
- 100 training mentors to help guide students into work or training options (\$25.5 million);
- extra cost relief for low income families and families who live in remote locations (\$11.8 million);
- additional funding for non-government schools and for TAFEWA colleges and other training institutions to ensure that non-government school students have the option of continuing their education at school or at a non-school place of learning (\$13.3 million); and
- additional funding for the Curriculum Council to record and certify the achievements of students in combinations of education, training and employment so that they have formal accreditation that can be presented to prospective employers or to help them on their way to further education (\$3.3 million).

Tackling Skills Shortages

Over the next four years \$21.4 million will be provided to tackle skills shortages in Western Australia through the following initiatives:

- partnership with industry to train 30,000 apprentices and trainees, with special emphasis on areas of skills shortage (\$14 million);
- development of rapid-response training to address immediate or imminent skills shortages (\$4.2 million);
- a plan to re-engage unemployed and under-employed 15 to 24 year olds who do not have formal qualifications (\$2 million);
- funding to establish a Master Class of Trades for apprentices and young trades people who strive for excellence (\$400,000); and
- the establishment of a voluntary mentor program that will enable senior trades people to pass on some of their valuable knowledge to younger workers (\$800,000).

Improving Literacy and Numeracy

Following the highly successful Getting it Right Literacy and Numeracy strategy, which employed more than 300 specialist teachers in government primary schools, an extra 25 specialist teachers will be employed to work in priority high schools (\$6.9 million). Professional development and other support will also be provided (\$1.5 million).



Behaviour Management

The successful Behaviour Management Program has been expanded by the provision of an additional \$7.6 million over four years for the following:

- a four year commitment of \$4.7 million to help Gerard Neesham's Football Academy establish a presence in six more locations;
- \$1.4 million to double the funding for the school chaplaincy service;
- \$1.1 million to extend the school volunteer program; and
- \$400,000 to boost resources for the specialist anti-suicide agency, Youth Focus.

This is in addition to the \$64.5 million package included over the four years from 2004-05 to 2007-08 for the Behaviour Management and

Discipline Strategy, which involves the recruitment of an additional 125 teachers to allow class sizes to be reduced.

Putting more Computers in Schools

An additional 105 primary and secondary schools will receive computer resources and teacher training over the next four years at a total cost of \$29.5 million. The 56 regional and 49 metropolitan schools will join many of the original 100 schools that received additional computer resources over the last four years to form clusters. The cluster model will ensure neighbouring schools share similar computer technology and will provide for efficient delivery of professional development for teachers.

Promoting Academic Excellence

Perth Modern School will be re-established as the State's premier school of academic excellence at a cost of \$27.9 million.

Services to gifted and talented students at all public schools will be improved with targeted funding of \$700,000 over four years.

Students in public schools will be encouraged and rewarded for outstanding academic achievement with scholarships and bursaries (\$1.1 million).

Schools Maintenance

Maintenance programs will increase to \$89 million in 2005-06 including \$30 million to be spent under the 'Fixing our Schools' program, which is specifically designed to reduce the backlog in maintenance.



Drew Wheeler: Apprenticeship takes a hobby to a career

Boya cabinet maker Drew Wheeler has used the apprenticeship system to turn his hobby of producing high-class furniture from raw timber into an exciting career.

Last year, Drew's hard work saw him named the John Hughes WA Apprentice of the Year at the WA Training Excellence Awards.

The State Government is developing a range of skills and training initiatives – including an industry partnership plan – to increase apprenticeship and traineeship numbers to meet the growing demand for skilled workers.

Drew completed his cabinet making apprenticeship in March and is now gaining vital managerial experience working at Drage Furniture where he did his apprenticeship.

Improving Services

Continued

Upgrading and Building Schools and Colleges

\$226.9 million will be spent in 2005-06 on government schools and TAFE college infrastructure, including:

- the completion of three new primary schools and continued construction of three replacement primary schools;
- the commencement of six new primary schools and one replacement primary school;
- the continued construction of the replacement for Kwinana Senior High School and the new Comet Bay College at Secret Harbour;
- the commencement of four new high schools at Atwell, Dalyellup, Ellenbrook and Vasse, and a new senior college on the South West Regional College of TAFE site in Bunbury; and
- major construction works for the Henderson Marine project, Fremantle Stage 1 Maritime project and the Batavia Coast Marine Centre in Geraldton.

QUALITY HEALTH CARE

Operating expenditure for health will reach \$3.5 billion in 2005-06 – this represents an increase of \$171 million or 5.1% from 2004-05.

Capital works expenditure is expected to be \$220.4 million in 2005-06 – an increase of \$22.4 million.

Health Reform

Work will continue on implementing the State Government's long-term blueprint outlined in the Reid Report to improve clinical services and revitalise health infrastructure across the State.

A number of initiatives are underway including the recent purchase of the 95 bed Kaleeya Hospital and the 61 bed Galliers Private Hospital, which has increased bed numbers in the public health system.

In partnership with local GPs, after-hour GP clinics have opened at Fremantle Hospital, Royal Perth Hospital, Joondalup Health campus and Rockingham/Kwinana District Hospital.

A major development in ambulatory care is underway that will dramatically increase the number and range of services that patients can receive in their home or settings other than hospitals.

New Health Care Initiatives

Winter Demand and Bed Management Strategies

To manage the peak service demands for health, the Government has allocated additional funding for the 2005 Winter Demand and Emergency Demand Strategies, totalling \$11.4 million in 2004-05 and \$27.6 million in 2005-06.

The Government has also allocated funding for the contractual commitments to support the Winter Demand Strategy including co-located General Practitioner Clinics, enhanced ambulance services by St John's Ambulance and the Residential Care Line totalling \$47.1 million over the four years to 2008-09.

As part of the Bed Management Strategy, the Government has approved funding of \$33.1 million in 2005-06, \$34.9 million in 2006-07, \$36.8 million in 2007-08 and \$38.9 million in 2008-09, to permanently maintain the additional 130 beds opened in 2004-05.

Waiting Lists

An additional \$40 million over four years has been allocated to reduce the time patients are waiting for elective surgery.

An additional \$7 million in 2004-05 has also been provided to the Kaleeya and Galliers Hospitals to reduce elective surgery waiting lists and waiting times for surgery.



Cancer Services

Funding of \$26 million over four years has been committed to improve cancer coordination and standards of care for cancer patients, with a particular focus on improving cancer expertise and care to rural communities. This will consist of:

- specific cancer prevention and care strategies;
- improvements to palliative care and support services;
- additional funding to ensure that cancer research is rapidly and directly applied to clinical practice;
- extensions to the State-wide Skin Cancer Prevention Program run by the Cancer Council of Western Australia; and
- the introduction of a State-wide colorectal screening program.

The Government is also allocating \$6.5 million in 2005-06 and 2006-07

to build a new cancer facility at the South West Health Campus in Bunbury.

Good Health Policy

The Government is investing an additional \$15 million over the next four years to further improve the health of the community, thereby keeping people out of hospitals and reducing health costs. This additional funding will build on the success of campaigns such as Quit WA (smoking cessation), 'Go for 2 & 5' (nutrition) and 'Find 30' (physical activity), which aim to prevent or lessen the impact of falls and chronic, lifestyle-related disease, such as cancer, diabetes and heart disease.

Ambulance Cover – Pensioners

The Government has allocated \$14 million per year to provide free ambulance travel for aged pensioners and a 50% concession for other seniors aged 65 and over from 1 July 2005.

Nurses

This budget incorporates an additional 800 nurses relative to the 2004-05 Budget.

In addition, a total of \$12.4 million over four years has been provided to undertake a range of initiatives to support nurses, including:

- provision of childcare support;
- a zero tolerance approach to workplace violence and aggression; and
- enhancements to the Nursing Scholarship Support Scheme.

Dental Care

The Government has provided additional funding of \$1 million per annum over the next four years to reduce waiting times for eligible patients in the State's Dental Health Service.



Extra funding tackles elective surgery waiting lists

Geoffrey Baker from Como is one of thousands of Western Australians to undergo elective surgery sooner thanks to additional State Government funding.

The 76-year-old had been on the waiting list since 15 April 2005 and within a month underwent day surgery at Royal Perth Hospital to have a haematoma removed from under his jaw.

Registered Nurses Venus Parola (left) and Anette Smith provide world-class care for people like Geoffrey and are pivotal in helping bring elective surgery waiting lists down to record lows.

An extra \$40 million has been allocated by the State Government to cut waiting lists over the next four years.

Improving Services

Continued

Peel Region Health Services

The Government has allocated \$4 million over the forward estimates to review and improve the delivery of health services in the Peel region with a particular emphasis on Murray Districts Hospital.

Obstetrics

Funding of \$2.4 million over four years has been provided to establish and maintain a State-wide Obstetric Support Unit. The unit will be established as part of the Women's and Children's Health Service and be responsible for the development of a State-wide network of obstetric services and act as a central clinical reference point.

Capital Works

Fiona Stanley Hospital and Upgrades to Services

Significant funding has been allocated to construct the tertiary Fiona Stanley Hospital and provide further services to patients south of the river, including:

- \$420 million for Stage One of the construction, with \$191 million to be spent over the next four years;
- \$67 million to re-develop the Rockingham-Kwinana District Hospital;

- continued upgrades at Fremantle Hospital to focus on sub-acute care, aged care, rehabilitation, mental health, day surgery and community-based services; and
- continued support for the after hours General Practitioner Clinics at Fremantle and Rockingham-Kwinana hospitals.

Country Hospitals

Substantial funding has been provided to significantly upgrade health services in the country, including:

- \$78.6 million to upgrade facilities in the Kimberley region, including the redevelopment of Broome Regional Hospital, a new hospital in Fitzroy Crossing, the replacement of Halls Creek and Wyndham Hospitals and the upgrade of Kununurra Hospital; and
- bringing forward the construction of the new \$65 million Hedland Hospital and the \$20 million redevelopment of Albany Hospital, with planned completion of both projects in 2007-08.

The Government will invest a total of \$30 million (\$1 million in 2007-08, \$9 million in 2008-09 and \$20 million in 2009-10) to upgrade the Kalgoorlie Regional Hospital to a Regional Resource Centre in order to provide more locally accessible hospital care in the Goldfields region.

The Government has allocated \$6.5 million over 2005-06 and 2006-07 to build a facility for a linear accelerator at Bunbury Hospital. This will be the first cancer facility outside the metropolitan area and will enable patients in the South West to be provided with life-saving radiation therapy treatment closer to home.

Funding of \$2.5 million has also been allocated in 2005-06 for a purpose built Community Mental Health facility at Bunbury Regional Hospital to provide integrated mental health services to the communities of the South West.

A total of \$6.2 million over four years, beginning in 2005-06, has been allocated for an upgrade to the emergency department at the Peel Health Campus and for Stage Two of the new Mandurah Community Health Centre development.

Joondalup Hospital

The Government has committed a further \$5 million towards the provision of an additional 30 inpatient mental health beds at the Joondalup Health Campus.



IMPROVING COMMUNITY SAFETY

Operating expenditure for police and justice will reach \$1,387.6 million in 2005-06 – this represents an increase of \$61.8 million or 4.7% from 2004-05.

Capital works expenditure is expected to be \$228.2 million in 2005-06 – an increase of \$94.4 million.

Police Service

The Police Service's operating budget of \$703.5 million represents an increase of \$47.4 million or 7.2% compared to the estimated outturn for 2004-05.

An additional 80 police officers and 40 civilian staff will be recruited in 2005-06 which will commence the Government's commitment of an additional 350 police officers (above normal attrition) and 160 administrative and expert civilian

staff (e.g. legal officers, analysts, professional trainers) to be recruited over the next four years. Together with the Police Service's Frontline First strategy, these measures will enable more than 500 police officers to be deployed to front-line policing duties by 2008-09.

They will also be better equipped and better supported.

To expand the capacity of DNA sampling and obtain analysis results quicker, funding of \$2.1 million has been provided to purchase and maintain additional equipment (\$1.2 million in 2005-06) and employ additional staff (\$940,000 per year) at the PathCentre, in accordance with the Government's Smarter Policing Policy.

It is estimated that 20,000 persons' DNA samples will be collected in 2005-06. Since the DNA legislation

came into existence 54,000 personal DNA samples have been taken.

To broaden the range of services available from the Police Service's Canine Unit, funding has been provided for the:

- acquisition of an additional four general purpose dogs to enable a 24 hour 7 days a week service delivery within the metropolitan area and two new special purpose firearms/ explosive dogs; and
- establishment of a breeding program to ensure an ongoing supply of suitable police dogs.

Also, commencing in 2006-07 funding has been provided to increase canine services to regional Western Australia through the acquisition of seven new general purpose dogs to be located at Bunbury and at new services at Kalgoorlie, Albany and Geraldton.

Simple solutions to battling burglars

Community crime-fighter Ted Dillon says simple solutions are often the best way to battle burglars.

The former police officer has joined the State Government's anti-burglar campaign, Operation Countdown, as a volunteer consultant doing security checks on people's homes.

Ted's work during a special pilot project in the Bentley/Morley region led to a 43 per cent reduction in burglaries – one of the most significant drops on record – and now the program will be expanded to more than 60 suburbs.

"It's a great job informing people how to fight burglars and it can be done simply by ensuring doors and windows are properly secured," Ted said.



A Budget for All We

GASCOYNE

- \$5.6 million for replacement for Shark Bay Primary School
- \$4.9 million for additions and improvements to high schools
- \$4.8 million to complete the Coral Bay Access Road and boat launching facility
- \$3.3 million to construct and seal the Carnarvon-Mullewa Road from the North West Coastal Highway to Gascoyne Junction
- \$2.2 million for Carnarvon flood mitigation works on the North West Coastal Highway
- \$1.5 million for the redevelopment of the Carnarvon Hospital

PERTH METRO

East Metropolitan

- \$32.7 million on upgrades to new and existing schools and TAFE colleges
- \$19.5 million to be spent by Western Power on various capital works
- \$17 million on Offender Management including upgrades and extensions to Bandyup as well as Wooroloo perimeter fencing
- \$15.3 million for the Police Operations Support Facility and replacement police facilities
- \$4.1 million for the Kalamunda Hospital redevelopment

North Metropolitan

- \$43.9 million to construct the CBD Courts and refurbish the Central Law Courts
- \$25.6 million for upgrades to new and existing schools and TAFE colleges
- \$24 million for Members Equity Stadium Stage 2
- \$18.1 million for various new and upgraded police facilities
- \$15.2 million for the Fremantle Port Authority for improvements to the North Quay
- \$10.7 million for Sir Charles Gairdner Cancer Centre Stage 1

South Metropolitan

- \$314.8 million on the Perth Seawater Desalination Project
- \$47.5 million on upgrades to new and existing schools and TAFE colleges
- \$26.4 million on constructing and sealing the Roe Highway from South Street to the Kwinana Freeway
- \$9.8 million for the Rockingham Transit System
- \$9.2 million for the Fremantle Port Authority for improvements to Victoria Quay, Inner Harbour and the Fremantle Waterfront Project
- \$3 million for Stage 1 of the redevelopment of the Rockingham-Kwinana Hospital
- \$2.6 million for the Asian Elephant Exhibit at Perth Zoo

WHEATBELT

- \$9.3 million to reconstruct the Great Eastern Highway from Hines Hill to Merredin
- \$6.9 million to reconstruct the Great Eastern Highway from Merredin to Walgoolan
- \$4.8 million for the redevelopment of the Moora Multi Purpose Centre
- \$2.9 million for replacement facilities for the Western Australian Meat Industry Authority at Muchea
- \$2.8 million for Bruce Rock water quality improvements
- \$2 million for additions and improvements to Narrogin Senior High School

PEEL

- \$21.2 million on the Alinta Co-generation Project at Pinjarra
- \$16.9 million on infill sewerage program works
- \$4 million for construction on the new Perth to Bunbury Highway
- \$3 million in additions and improvements to Pinjarra Senior High School
- \$2.5 million for additions and improvements to Pinjarra Primary School

KIMBERLEY

- \$18.8 million on significant upgrades to health facilities
- \$6.8 million for new and replacement police facilities
- \$6.6 million to establish a hostel in Broome under the Broome Regional Hostels Authority
- \$6 million to upgrade the Wyndham town water supply
- \$5 million for the jetty extension for the Broome Regional Port
- \$4.4 million for Phase 1 of the Aboriginal Remote Communities Project
- \$3.4 million for Kimberley College – Broome Campus

SOUTH WEST

- \$70.7 million for the new South West Highway
- \$22.7 million on upgrades to the South West Highway, Vasse to Albany
- \$3 million to construct the South West Highway, Vasse to Albany
- \$2.9 million for upgrades to the South West Highway, Vasse to Albany
- \$2.6 million for additions and improvements to the South West Highway, Vasse to Albany
- \$2.5 million for additions and improvements to the South West Highway, Vasse to Albany

Western Australians

Facilities
ities
er the Country High Schools
supply
Port Authority
e Communities Power Supply
mpus

PILBARA

- \$12.5 million for Stages 1 and 2 of the Hedland Regional Resource Centre Replacement
- \$12 million to construct and seal Stage 2 of the Karratha-Tom Price Link Road
- \$11.3 million for various upgrades and expansion to regional water distribution
- \$4.5 million for the Karratha Senior High School Redevelopment and for additions and improvements to Hedland Senior High School
- \$4.4 million for infrastructure and other works at the Port Hedland Port Authority
- \$1.2 million for new and replacement facilities at the Dampier Peninsular Police Station

MID WEST

- \$15.4 million to complete Stage 1 of the Geraldton Southern Transport Corridor
- \$5.3 million to construct and seal the Goldfields Highway from Wiluna to Meekatharra
- \$5.1 million to redevelop the Geraldton Regional Resource Centre
- \$4.2 million for the Batavia Coast Marine Centre, Central West TAFE College
- \$4 million for the redevelopment of the Geraldton Secondary College
- \$2.6 million for the Geraldton foreshore redevelopment and CBD revitalisation project

GOLDFIELDS-ESPERANCE

- \$36.8 million at the Esperance Port, including construction of a sulphur storage shed and bulk storage facility
- \$19.4 million to reconstruct the Eyre Highway, Caiguna-East to Balladonia
- \$14.2 million on additional water storage at Kalgoorlie
- \$7.2 million for additions and improvements to Esperance High School
- \$4.3 million for the Hopetoun Town Water Supply Desalination System
- \$2.7 million for the Warakurna Police Station as part of the Gordon Inquiry

GREAT SOUTHERN

- \$10 million for the Albany Entertainment and Convention Centre
- \$9.1 million for the Albany Waterfront redevelopment
- \$6.3 million on infill sewerage program works
- \$5.1 million to construct and seal the Albany Ring Road from Chester Pass Road to Albany Highway
- \$4.3 million for the infrastructure for the Albany Justice Complex
- \$4 million for Stage 1 of the redevelopment of the Albany Regional Resource Centre

power upgrades and transmission works
upgrades to new and existing schools and TAFE colleges
construct passing lanes and improve intersections on the Bussell
to Margaret River
upgrades to the Margaret River Hospital
additions and upgrades to Bunbury Regional Prison
new Mental Health Clinic in the South West

Improving Services

Continued

The Police Service has a capital works budget of \$342.6 million over the next four years, which will see the construction and completion of 27 police facilities, the development and implementation of the information and communication systems under DCAT and the Perth Metropolitan Radio Network by 2008-09. The capital works program for 2005-06 totals \$108.8 million and consists of the following major projects:

- \$800,000 for the commencement of the design and planning phase for the replacement of the current Perth Watch House and associated functions, including the relocation and construction of a new Specialist Crime Portfolio building as well as the refurbishment and additions to Curtin House. The estimated total cost of this project is \$81 million and it will, amongst other things, facilitate a revitalisation of police presence in Northbridge;
- \$10 million for the acquisition of two new fixed wing turbine engine, pressurised aircraft capable of flying in all weather conditions. These will replace existing aircraft and allow the Police Service to reach any location within Western Australia to provide policing services;
- additional funding has been provided across the forward estimates to bring forward the construction of police stations at Ellenbrook, Stirling and the Pilbara (Karratha), commence construction of a new station at Derby and upgrade the South Hedland station. In addition \$445,000 has been allocated

in 2004-05 to purchase special purpose vehicles (mobile lock-ups) to support front line police;

- funding of \$1 million has been allocated in 2005-06 to procure a new Forward Looking Infra Red (FLIR) unit, which will replace the outdated model currently utilised by the Air Support Unit; and
- as part of a forensic technical enhancement project, funding of \$1.4 million in 2005-06 has been allocated to purchase eight livescan units and establish a data-transfer network which enables the electronic capture of fingerprints, direct transmission to the National Automated Fingerprint Identification System (NAFIS) searching and storage facility in Canberra and real time identification of persons.

Justice

The success of police strategies in tackling crime has resulted in a significant increase in prisoner numbers. The Government has committed an additional \$152.5 million over the next four years in order to accommodate the extra prisoners within the system.

In response to the 'Report on the review of case management practices for the supervision of high risk offenders under supervision in the community', an additional \$7.5 million over the next four years has been provided to improve case management through community-based supervisors.

As part of an emphasis on making Western Australia a safer community the Government has implemented a comprehensive Juvenile Justice Strategy costing \$20.7 million over the next four years. This intensive supervision program is designed to target juvenile crime and increase the successful rehabilitation of young offenders in regional and remote areas.

This Strategy will be complemented with the construction of new Juvenile Detention Centres at a cost of \$12 million each to be located at Kalgoorlie and Geraldton. Additional facilities to complement Banksia Hill Juvenile Detention Centre are also planned.

Other capital works in the \$119.4 million program include:

- the new purpose-built District Court and superior criminal courts complex on the Hay/Irwin Street site in the Perth CBD;
- additions and alterations to the existing Albany Justice Complex including facilities for Community Justice Services; and
- the construction of perimeter fencing at the minimum security prisons of Wooroloo and Karnet.



SUPPORTING COMMUNITIES

Community Development

Expenditure by the Department for Community Development will increase to \$235.4 million in 2005-06, an increase of \$5 million or 2.3% on the estimated outturn for 2004-05.

Children and Child Welfare

Around \$118 million will be spent in 2005-06 on children and child welfare initiatives, being:

- out-of-home care services – \$76.1 million;
- child protection services – \$23.7 million;
- a range of initiatives in response to the Gordon Inquiry, including employment of specialist workers and Community Partnership Grants – \$7.7 million;
- family strength, including Early Years initiatives – \$4.2 million;
- working with children criminal record checking – \$2.5 million;
- family preservation services – \$2.3 million; and
- Children's Commissioner – \$1.5 million.

This represents an increase in spending on child welfare in 2005-06 of \$26.6 million or 29% compared to 2004-05.

This includes funding of \$1.1 million in 2005-06 to provide professional home based care to children and young people with severe emotional and behavioural disturbances. The home based care will be provided in the homes of salaried carers with specialist competencies throughout the metropolitan area and incorporates a provision for 16 professional carers. In addition, \$1.3 million has been provided in 2005-06 to work closely with professional carers, families, teachers and the community to ensure that high risk children and young people are provided with appropriate treatment.

Seniors and Social Concessions

The State Government's contribution to policies and programs that support active ageing is valued in excess of \$68 million per annum. In addition, approximately \$300 million per annum is provided for concessions on State and local government services to support the well being of seniors and pensioners.

Disability Services Commission

Expenditure on disability services will increase to \$303.2 million in 2005-06.

The Government has continued its commitment to provide additional accommodation support over and above the targets set in the independent Accommodation Blueprint report (prepared for Government in 2003). An additional \$7.4 million will be allocated in 2005-06 specifically for accommodation support funding, resulting in accommodation support for 134 people.

This includes an additional \$1.4 million in 2005-06 to support 25 people living at home with carers aged 70 years and over.

Individual and family support services are essential to meet the needs of people with disabilities and their families and carers. This year the Government will be providing more than \$6.3 million in growth funding for a range of individual and family support strategies designed to meet the requirements of people with disabilities within their local communities.

To assist children with disabilities, an additional \$600,000 has been provided for early childhood intervention services. This will reduce the waiting times for parents seeking specialist professional support for preschool children, and allow for more intensive levels of support during the critical early years of development.

Improving Services

Continued

State Housing Commission

The State Housing Commission will again deliver a sizeable public housing program with a total investment of \$185.5 million in the construction of new units in 2005-06.

The State Housing Commission is also planning to spend a total of \$77.8 million on its land program in 2005-06. This includes acquisitions, development and redevelopment that combined will produce more than 2,480 lots. Of these lots, 1,910 will result from contributions of \$23.3 million to joint venture projects with the private sector.

The award-winning New Living Program will also continue with total expenditure of \$43.1 million. The program, which includes upgrading parks and community facilities, has been highly successful in reducing crime rates and increasing property values. In 2005-06, 418 units will be refurbished. This includes the continuation of projects in New North, Southwell and Queens Park.

Keystart

The Government continues to provide significant support to Western Australians seeking to own their own homes through low-deposit, low-cost, affordable home ownership schemes. The provision of loans to homebuyers on low to moderate incomes, disabled, Aboriginal and Torres Strait Islander and public housing households, is primarily made through the Keystart scheme with funding of \$650.9 million. A further \$8.6 million is provided under the Commission's shared equity schemes. The Keystart scheme is expected to provide 5,000 loans with the Aboriginal, Access and Goodstart schemes providing in excess of 200 loans.

Providing New Jobs

Providing new jobs and opportunities for all Western Australians is a key priority of this year's budget.

By investing in infrastructure, the State Government will ensure it can keep pace with the demands of Western Australia's booming economy and sustain long-term economic growth. By getting the infrastructure basics right, the jobs and opportunities will continue to flow.

ECONOMIC GROWTH

The Western Australian economy is forecast to grow by a healthy 4.5% in 2005-06, the fifth consecutive year of above trend growth. Over this five year period, the economy will have expanded by around 30%, to be worth an estimated \$102.3 billion.

In 2005-06, business investment is expected to reach a record \$16.5 billion, supported by projects such as the \$1.6 billion Ravensthorpe nickel project, the \$1.5 billion Enfield oil and gas field development and further iron ore capacity expansions.

Western Australian goods exports are forecast to increase by 8.25% to more than \$40 billion in 2005-06. Growth will be supported by production from recently completed projects such as the 4th Liquefied Natural Gas processing train and the Telfer Deeps gold mine expansion.

Strong economic growth is creating job opportunities. There are now over one million people in full time or part time work in Western Australia. A further 20,000 new jobs are expected to be created in 2005-06, and around 90,000 new jobs will be created over the four years to 2008-09.

MAJOR ECONOMIC PARAMETERS						
Western Australia						
	2003-04 Actual	2004-05 Estimated	2005-06 Budget Estimate	2006-07 Forward Estimate	2007-08 Forward Estimate	2008-09 Forward Estimate
	%	%	%	%	%	%
Real Gross State Product Growth	7.5	5.25	4.5	4.25	4.5	4.5
State Final Demand Growth	8.0	5.0	2.25	3.25	4.0	4.0
Employment Growth	1.7	3.5	2.0	2.0	2.25	2.25
Unemployment Rate	5.7	4.75	4.75	4.75	4.75	4.75
Wages Growth ^(a)	3.2	4.25	3.25	3.25	3.25	3.0

Reflecting strong jobs growth, the unemployment rate is expected to remain at 30 year lows over the forward estimates period.

INVESTING IN INFRASTRUCTURE

The total public sector Capital Works Program for 2005-06 is forecast to be a record \$4.7 billion, an increase of 21% over the 2004-05 Budget estimate and 45% larger than the 2003-04 program. These increases are indicative of the Government's commitment to maintaining and improving the State's infrastructure, particularly in the areas of energy, water, health, education and public transport.

Western Power

Western Power's total capital program of \$599.4 million in 2005-06 represents a \$135 million (or 29%) increase over the 2004-05 program and is a substantial stimulus for the State's electricity supply system. This program is part of a longer term plan to improve the quality, reliability and safety of supply in both regional and metropolitan areas. It will also

provide increased capacity to serve existing and new customers.

The program includes \$379.9 million for transmission and distribution projects, a \$73.5 million (or 24%) increase over 2004-05. Of this, \$198 million has been provided for the connection of new domestic and commercial customers, as well as new generators, and \$102.7 million will be used to expand the capacity of the network to meet the needs of new customers as the economy grows. The funding also includes \$9.7 million in 2005-06 for a new safety program to replace the overhead service wire connections to 300,000 homes and small businesses by 2012 (total cost of \$105 million over seven years). The program has been initiated in response to investigations into the deaths of two children in Wyndham. To improve network reliability problems, \$13 million is allocated to a program to reduce average transformer loadings at metropolitan substations.

Providing New Jobs

Continued

Together with additional network operating expenditure, the networks capital program targets the achievement of a 25% improvement in the reliability of electricity supply over the next four years. The program also aims to eliminate 90% of all outages caused by the failure of overloaded transformers.

Funding has also been provided for generation works, including \$46.1 million for capacity enhancements to ensure adequate reserve capacity in 2006-07 and \$32 million for sustainable energy projects.

Water Corporation

The Water Corporation will invest a total of \$714.8 million in 2005-06 on various capital projects to meet the water and wastewater needs of the growing State and respond to the drying climate. The program represents a substantial \$303.1 million (or 74%) increase over 2004-05 funding, and is essential to providing high quality and reliable water and wastewater services.

Within this program, \$314.8 million relates to the construction of the Perth Seawater Desalination Plant and associated infrastructure, which will provide a climate independent 17% increase in the public water supply.

In addition, \$82.9 million will be spent on new and existing wastewater treatment plants and the conveyance network. This includes the commencement of new wastewater schemes at Alkimos and East Rockingham in response to

unprecedented land development and population growth in the north-west and south-west metropolitan corridors.

Ports

The Government has spent \$432 million on ports in Western Australia since coming to office and will spend a further \$101 million in 2005-06. Major projects planned for 2005-06 include:

- Fremantle Port Authority – the Port will spend \$40 million in 2005-06 on a number of projects including the North Quay Rail Terminal and Rail Loop, the Kwinana Bulk Terminal and the North Quay Berth Upgrade. Infrastructure for Stage 2 of the HIs melt pig iron plant project will also proceed if the company commits to this stage;
- Esperance Port Authority – the Port plans to spend \$36.8 million in 2005-06 to progress the construction of a sulphur storage shed and a dual purpose shore based crane to enable BHP Billiton to export from the Ravensthorpe nickel project. A multipurpose storage facility and a rail spur will also be constructed to cater for several mineral projects requiring storage; and
- Broome Port Authority – the extension of the Broome Jetty, with \$5 million to be spent in 2005-06 within a total project cost of \$16.8 million, will enable the Port to service the rapidly growing trade needs of the West Kimberley region.

Dampier to Bunbury Natural Gas Pipeline

In 2004-05 the Government facilitated the sale of the Dampier to Bunbury Natural Gas Pipeline and necessary investment in expansion of its capacity through the provision of financial assistance to the purchasing consortium of \$88 million. The assistance was in the form of a 99-year loan, which may convert to a non-repayable grant at the request of the consortium if the milestones set by the Government are satisfied. This is a powerful incentive for the consortium to increase the pipeline's capacity, which will provide long-term energy security for Western Australia.

Roads

The Government is committing \$302 million in 2005-06 to improving and expanding the State and local road networks.

Major projects funded in 2005-06 include: Roe Highway, South Street to Kwinana Freeway – \$26.4 million; Tonkin Highway, Mills Road West to Thomas Road – \$21.8 million; Eyre Highway, Caiguna-East to Balladonia – \$19.4 million; Mitchell Freeway, Hodges Drive to Shenton Avenue – \$16.2 million; Karratha Tom Price Link Road – Stage 2 – \$12.1 million; Great Eastern Highway, Hines Hill to Merredin – \$9.3 million; and Great Eastern Highway, Merredin to Walgoolan – \$6.9 million.



The budget contains a commitment of \$85 million dedicated to initiatives shown to be highly effective in reducing death and injuries on Western Australia's roads, including:

- an increase in the State Black Spot Program by \$5 million to \$20 million;
- the new Safer Roads Program initiative with funding of \$20 million;
- continuation of the Road Enhancement Program with funding of \$30 million; and
- the Road Trauma Trust Fund has been underwritten to \$15 million.

TOURISM

An extra \$22.4 million over four years has been provided to accelerate growth of the State's tourism industry.

The plan is based on a number of broad strategies including:

- improving tourism infrastructure and services throughout the State;
- stepping up marketing and promotion; and
- protecting and promoting key tourism icons.

The additional funds will build on tourism's contribution to Western Australia's economic growth by creating more job opportunities, particularly in regional areas.

The regional events scheme has been boosted by \$1 million over four years to encourage more events, visitors and economic benefits for regional Western Australia.

An additional \$2 million over four years has also been provided to expand the Better Business Blitz scheme giving tourism operators in the regions access to information and strategies to increase expertise and skills.

Broome is a major tourism icon for the State. In response, a Government contribution of \$1 million will be provided toward the new \$3 million Broome Visitor Centre which is expected to be operational during 2007.



New Rockingham dive attraction boosts local tourism

The West Coast Dive Park off Rockingham will have a new attraction this year with the scuttling of the 400-tonne Saxon Ranger, providing a boost to tourism in the area. The State Government is contributing \$250,000 to the long-awaited project.

Rockingham-based proprietor of Scubanautics, Darrin Scott, said the sinking of the old trawler was bound to benefit the local economy.

"We've been trying to get something like this for Rockingham for a long time," Darrin said.

"The sinking of the Swan near Busselton delivered a big boost for them, and with Rockingham being so close to the metro area, this new wreck will be a great drawcard for daytrippers and dive enthusiasts."

Protecting Our Lifestyle

Western Australians cherish their unique lifestyle, taking full advantage of both the State's built and natural environment. The State Government is committed to protecting and enhancing Western Australia's unique lifestyle and environment for future generations.

PROTECTING THE ENVIRONMENT

Salinity

Dryland salinity continues to affect agricultural land, water resources, biodiversity and infrastructure (particularly towns and roads) throughout the agricultural area. Work will continue with community Natural Resource Management groups in the regional areas to develop strategies to address this major problem.

Increased Investment in Firefighting

In addition to the funding provided as part of the 2004-05 Budget, the Government will allocate an additional \$11 million over the forward estimates to the Department of Conservation and Land Management to recruit an additional 40 staff and to engage other additional resources for fire management. These additional staff will be employed across the State including the Southwest, South Coast, Kimberley, Pilbara, Goldfields and the Wheatbelt.

Biodiversity

Western Australia contains eight of the 15 national hotspots, including the nation's only internationally

recognised terrestrial biodiversity hotspot in the South West region. As a further commitment to the conservation of our biodiversity, especially our unique flora, the Government will provide \$16.2 million over the next three years for the construction of a new State Herbarium. The new building will enable representative samples of the State's flora to be safeguarded and stored in modern conditions.

The Government has recognised the threat to biodiversity posed by cane toads and has approved funding of \$600,000 in 2004-05 and \$900,000 in 2005-06. The State Cane Toad Initiative will focus on preventing the establishment of this most obnoxious introduced pest in Western Australia.

Marine Conservation

Conservation of our marine and estuarine environments continues to be a priority for this Government.

In respect to enhancing marine conservation, in 2005-06 the Government is providing an additional \$573,000 for the Montebello and Barrow Island marine reserves, \$470,000 for the Jurien Bay Marine Park and \$195,000 for the Rowley Shoals Marine Park. A further \$1.65 million has been allocated for management and capital works associated with the Ningaloo Marine Park.

Swan River

In 2004, the Government committed \$15.5 million over four years to fix the Swan River. Of this, \$2.75 million will be spent in 2004-05, followed by \$3.35 million in 2005-06.

Development of new legislation to better manage and protect the Swan and Canning rivers progressed rapidly during 2004-05. The Government will prepare the legislation for further consultation before presentation to Parliament during the coming year. The new legislation will provide a solid base for coordinating effort to protect the rivers, which is the key to ensuring success of all of our actions.

Air Quality Management

The Government has allocated \$5.2 million across the forward estimates to undertake a series of studies as part of a strategic statewide approach to air shed management. This will ensure that air quality, particularly in key growth areas at Port Hedland and Collie, is understood and properly managed.

Sustainable Energy

The Government's electricity reform program will encourage renewable electricity generation and sustainable energy initiatives through the introduction of new market arrangements and open access to Western Power's network. The reform program has been designed to remove barriers and impediments to all renewable energy resources, including unpredictable sources such as wind generators.

In addition, Western Power has allocated \$32 million in 2005-06 to sustainable energy projects, including for the development of wind-diesel projects at Coral Bay and Hopetoun.



ENHANCING COMMUNITIES

New MetroRail Project

Expenditure on the New MetroRail project is planned to total \$401 million in 2005-06 and will include provision for the following:

- the delivery of 39 electric railcars (13 three car units) – \$42 million;
- continuation of construction of the Kwinana Freeway Railway Corridor, including work on the Mt Henry and Narrows Bridges – \$28.6 million;
- continuation of construction on the Southern Suburbs Railway infrastructure, including civil and engineering works to lay track, communications systems, signalling systems and the development of the power supply for the new service – \$149.6 million;
- commencement of the construction of nine stations between Canning Bridge and Mandurah – \$43.9 million; and
- continuation of the City Project works including the construction infrastructure from the Narrows Bridge to the Perth CBD such as tunnelling and two stations at William Street and on the Esplanade – \$105 million.

Public Transport Promotion

The Government has allocated \$2 million in matched funding for a \$3 million Commonwealth Greenhouse Gas Abatement program to help residents in the Perth metropolitan region reduce their car dependency.

The program will increase public transport patronage through improved information and promotion, building on the successful TravelSmart initiative and supporting the Government's major investment in Perth's rail network.

Public Transport Fare Policy

As part of the commitment to public transport, a new 50 cent student fare will be introduced for school students travelling to and from school on Transperth bus and train services and country town bus services. The fare will be fixed at 50 cents regardless of the number of zones travelled.

Improve Frequency of Bus Services – Clarkson, Warwick

The Government has committed funding for additional peak hour bus services to and from the Clarkson and Warwick railway stations.

Karratha Bus Services

Additional funding has been provided toward a bus service trial that links the communities of Wickham, Roebourne, Karratha and Dampier and is co-funded by the Shire of Roebourne.

A Better Deal for Families

Western Australian families will save \$25 a year under the Government's initiative to reduce motor vehicle running costs. Family concessions on motor vehicle registration will increase by \$25 to \$53 per year, saving families \$100 over a four year period. The move will cost the Government \$111.7 million over four years.

Safe Driving Policy

Under the new Road Safety Policy, young drivers who drive safely and avoid traffic infringements for two years will receive a free licence renewal for one year.

Protecting Our Lifestyle

Continued

Land Revitalisation and Development

The East Perth Redevelopment Authority will continue to work in the redevelopment areas of East Perth, the East Perth Power Station, The Village Northbridge and The Riverside, to deliver social, environmental and economic returns to government, including:

- \$14.4 million to continue work on the East Perth Power Station project; and
- \$16.1 million on The Riverside, which includes provision for the acquisition of land in the Riverside area, infrastructure, and redevelopment and environmental remediation work in the area north of the Queens Gardens and near the Causeway.

The Midland Redevelopment Authority will spend \$3.2 million in 2005-06 towards major works to preserve and protect the heritage buildings on the Midland Railway Workshop site.

The Maddington-Kenwick Action Plan identifies 100 actions aimed at enhancing and revitalising the Maddington Town Centre. Funding of \$2 million in 2005-06 and 2006-07 will be used together with other funds committed by the City of Gosnells, to implement actions recommended in the plan.

Cultural Assets

The Government has embarked on a significant capital works program to upgrade the State's cultural assets including:

- \$42.2 million for a new performing arts theatre in Northbridge, scheduled to be completed in 2008-09;
- \$14.2 million over four years on capital maintenance and equipment replacement for the Department of Culture and the Arts;
- a \$2.35 million contribution to the refurbishment of the Subiaco Theatre Centre, which is scheduled for completion in early 2006;
- \$2.2 million over four years for the development of statewide cultural and arts infrastructure through the Community Cultural and Arts Facilities Fund;

Smart planning ensures quality of life

Atwell resident Andrew Sinclair is looking forward to the completion of the Southern Suburbs Railway – one of the big infrastructure projects in this year's budget.

Andrew has built a home at Harvest Lakes – a LandCorp development incorporating the very latest sustainability principles, located within the booming southern corridor.

Proximity to the Kwinana Freeway means Andrew will soon have access to a fast, efficient public transport system linking Mandurah in the south to Joondalup in the north.

"I work in Perth's southern suburbs and Harvest Lakes is convenient for me," Andrew said.

"The opening of the new railway will give me extra travel options, including faster access to the city and the potential to save on my vehicle running costs."





- \$964,000 for the upgrade and refurbishment of the Blue Room Theatre in the Perth Cultural Centre, due for completion in December 2005; and
- \$320,000 in 2005-06 to complete the electrical upgrade at His Majesty's, at a total cost of \$1.5 million.

A total of \$9 million in 2005-06 will be invested in public library resources. An additional \$776,000 over the next four years will also be provided to the *Better Beginnings* family literacy program. Using the public library network, this is a statewide program aimed at meeting the early literacy needs of pre-school children and families.

The Government has committed \$8 million over the next four years to continue the development of the film industry in Western Australia through WA On-Screen. This funding will allow the film industry to continue to develop production in Western Australia.

Sport and Recreation

The Community Sporting and Recreation Facilities Fund (CSRFF) exemplifies the Government's commitment to the development of sustainable infrastructure for sport and recreation across the State and directly enhances the sporting and recreational experience of Western Australians.

For the 2005-06 funding round, \$6.9 million has been allocated for various projects including:

- Kambalda West: \$1 million towards construction of a community and recreation centre;
- Halls Creek: \$850,000 for construction of multi-purpose courts and gymnasium;
- Joondalup: \$550,000 towards the construction of clubrooms, change rooms, netball courts and the provision of floodlighting for rugby, soccer and athletics at Arena Joondalup;
- Bold Park: \$467,000 towards the construction of a 25-metre indoor pool and children's pool; and
- Mandurah: \$400,000 for the redevelopment of Rushton Park Sporting Complex.

In total, assistance has been approved to 118 projects for 2005-06 with approximately two-thirds of funding being allocated to projects in regional Western Australia.

In addition, the Government's allocation for major sport facility projects in 2005-06 includes:

- finalisation of the second stage of Members Equity Stadium as part of the Government's \$25 million contribution towards establishing a Perth based rugby team in the Super 14s competition;
- \$1.7 million for the State Indoor Centre that will cater for a wide variety of indoor based sports;
- \$2 million to progress the WA Netball Association's plan for a State Training Centre;
- \$2 million for a swimming pool facility in the Mindarie precinct; and
- \$2.5 million for the development of a swimming pool facility at Ellenbrook in the Shire of Swan.

Multipurpose Indoor Entertainment and Sports Stadium

The Government is offering financial assistance of up to \$50 million (including the value of any State owned land made available) to a private sector proponent to provide a Multipurpose Indoor Entertainment and Sports Stadium. The Stadium, which is to be situated within 10 kilometres of the Perth GPO, will have the ability to attract large-scale entertainment and sporting events to Western Australia.

Strengthening Our Regions

This year's budget ensures that regional Western Australia receives its fair share. The regions underpin Western Australia's thriving economy. Strong regions mean a strong State.

By investing in the regions through major infrastructure, the State Government is ensuring the long-term sustainability of these communities through job creation and improved services.

The Government is delivering a record capital infrastructure program across the regions, providing massive investment in health, education, and law and order. We are also keeping costs down for regional families.

REGIONAL INVESTMENT FUND

The Government will continue its support for the Regional Investment Fund (RIF) in the 2005-06 Budget by providing \$36.1 million. Major projects to be funded include:

- completion of the \$5 million Shark Bay World Heritage Interpretive Centre;
- continuation of the \$5.5 million South West On-line Project;
- continuation of the Roebourne Enhancement Scheme (\$2 million) and the Port Hedland Enhancement Scheme (\$4.5 million);
- the Regional Development Scheme, administered by the nine Regional Development Commissions (\$4.7 million);
- Regional Infrastructure Funding Program projects – \$3.8 million;
- the Indigenous Regional Development Initiatives Scheme – \$3 million;
- the Regional Headworks Program – \$2 million; and
- the Western Australian Regional Initiatives Scheme – \$1.2 million.

REGIONAL DEVELOPMENT COMMISSIONS

Pages 14 and 15 provide a breakdown of major regional projects. In addition, the following projects will be overseen by regional development commissions in 2005-06.

South West

Major highlights for the region include the completion of the Bunbury Coastal Enhancement Project, \$500,000 in infrastructure for Lake Kepawari, funding for provision of sewerage for the Picton Industrial Estate, the commencement of work for the new Bunbury City Library and redevelopment of the Koombana Bay Groyne.

Mid West

Major highlights for the region include the continued work on the Geraldton Foreshore Redevelopment and Central Business District Revitalisation Project, the preparation of Australia's submission to the international site selection committee for the Square Kilometre Array Radio Telescope Project and the continued support for the establishment and operation of the Geraldton University Centre.

Kimberley

Major highlights for the region include the upgrade of Broome Port and the Derby Wharf, the construction of an aquatic and recreation centre, a revitalisation project for Derby and further funding for the Healthy Stores Program, Indigenous Art Strategy, Mowanjum Arts and Tourism Centre and Kununurra Multi-Purpose Youth Facility.



Gascoyne

Major highlights for the region include new infrastructure for Coral Bay, completion of the Piyarli Yardi Aboriginal Heritage and Cultural Centre, the implementation of the Carnarvon 2020 Project, completion of the Shark Bay World Heritage Interpretative Centre and completion of the surge wall barrier.

Pilbara

Major highlights for the region include implementation of the Port Hedland Enhancement Scheme including the foreshore development and town centre development, implementation of the Roebourne Enhancement Scheme, implementation of the Pilbara Priority Partnership Fund, the creation of a turtle interpretative centre and \$500,000 for dust reduction in the west end of Port Hedland.

Goldfields-Esperance

Major highlights for the region include \$550,000 for the upgrade/refurbishment of the Goldfields Arts Centre, \$1 million for the Kambalda Community Recreation Centre, \$500,000 for the restoration of heritage buildings in Bayley Street, Coolgardie, \$130,000 to upgrade the floodlighting and re-grass the surface of Kalgoorlie's main oval and \$50,000 towards a miners' memorial in Kalgoorlie-Boulder.

Great Southern

Major highlights for the region include the planning and construction of the Albany Entertainment and Convention Centre, progression of the Albany Waterfront redevelopment including construction of a footbridge linking the Albany CBD to the foreshore, completing the funding allocation for the day therapy centre for the aged and the progression of the Vancouver Waterways project.

Peel

Major highlights for the region include funding to assist the Shire of Waroona to develop its town centre, the construction of the Pinjarra Railway Station and the redevelopment of the Mandurah Town Centre.

Wheatbelt

Major highlights for the region include additions and improvements to the Narrogin Senior High School, redevelopment of the Moora Hospital, reconstruction and upgrades to sections of the Great Eastern Highway and upgrades to energy infrastructure.

RIF funding delivers on-the-ground support

The State Government's \$80 million RIF is delivering new infrastructure to some of WA's most remote communities.

In the Kimberley, air transport plays a vital role in community life and business activity. Through RIF, the Government has contributed \$1.1 million towards the first and second stages of the Derby Airport upgrade project.

The \$2.3 million second stage includes reconstruction of the runway, taxiway and apron, and improvements to the airport's drainage system, ensuring the Royal Flying Doctor Service's continued use of the airport.

The upgrade also creates new opportunities for Derby as an ideal starting point for a unique Kimberley experience for visitors.



Delivering Our Commitments

The following are acknowledged with thanks for providing photographs.

Department of Education and Training

Department of Health

Department of Housing and Works

Department for Planning and Infrastructure

Disability Services Commission

Fire and Emergency Services Authority of Western Australia

Main Roads

Public Transport Authority of Western Australia

Police Service

Robert Firth

Swan River Trust

Water Corporation

Western Power Corporation